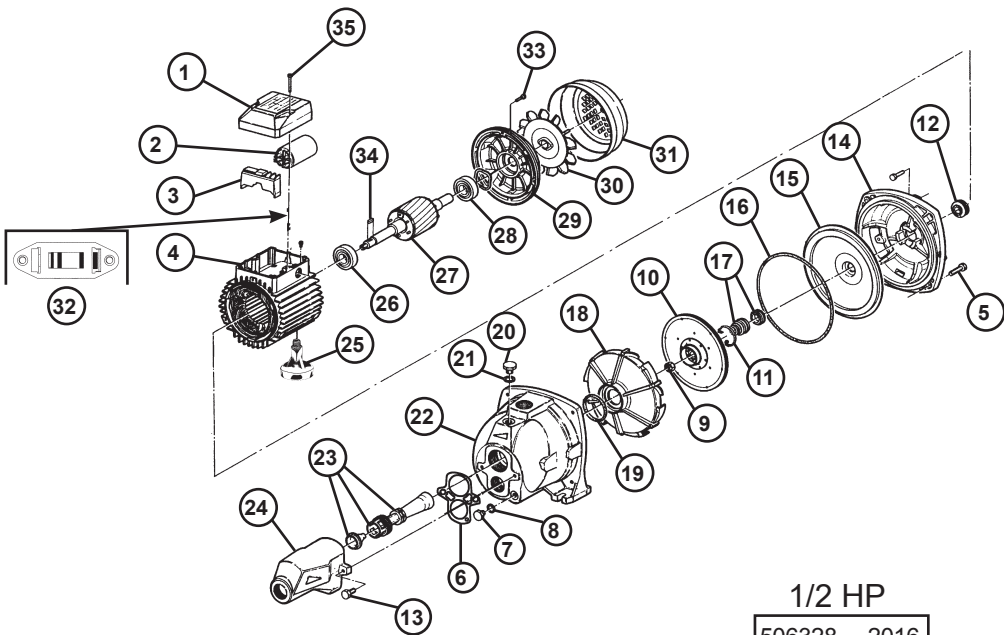


# REPAIR PARTS

REF	ITEM	DESCRIPTION	REF	ITEM	DESCRIPTION
1	506014	Junction box cover	18	506317	Diffuser
2	506629	Motor capacitor	19	506298	Diffuser "O" ring
3	506065	Capacitor junction box	20	506300	Priming plug
4	506030W	Stator 1/2HP	21	506400	Priming plug washer
4	506285W	Stator 3/4HP	22	506286	C.I. pump body
5	506297	Pump body cap screw	23	506308W	"O" ring, nozzle and venturi
6	506307	Ejector gasket	24	506306.1	Ejector body (only)
7	506299	Drain plug	25	506312	Motor foot
8	506315	Drain plug washer	26	506031	Pump side motor bearing
9	506022	Impeller nut	27	506314W	Rotor 1/2HP
10	506294P	Impeller 1/2HP	27	506284W	Rotor 3/4HP
10	506292P	Impeller 3/4HP	28	506032	Fan side motor bearing
11	506411	Seal snap ring	29	506296	Motor end bell
12	506026	Sand slinger	30	506017W	Motor fan
13	506415	Ejector body screws (4)	31	506016	Fan cover
14	506289	Pump bracket	32	506094	115/230V selector
15	506287	Seal plate	33	506430	Screws (3)
16	506288	Pump body "O" ring	34	506318W	Impeller shaft key
17	506637	Mechanical seal	35	506419	Cover bolt



Repair parts may be ordered your authorized point of sale of from  
BURCAM PUMPS