



## MODEL 125328H CONTROL BOX CONNECTION

2190 Dagenais Blvd. West    Tel. : 514.337.4415  
Laval (Quebec)                    Fax : 514.337.4029  
Canada                                info@burcam.com  
H7L 5X9                                see us at [www.burcam.com](http://www.burcam.com)

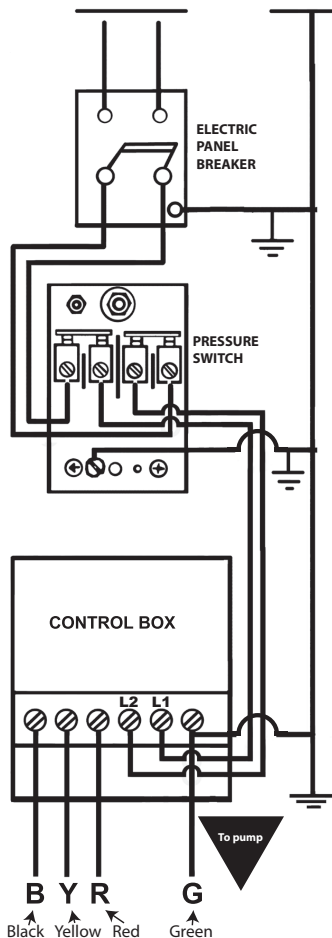
We recommend that a licensed electrician be employed to do wiring to the pressure switch. Permanently ground the motor in accordance to the electrical codes for your area.

Do not use an extension cord to connect your pump to the power source. From your distribution panel to the pressure switch, install a wire gauge no smaller than 14 gauge. See the wire chart for wire length above 100'.

Please read these instructions carefully. **Failure** to comply to instructions and **designed** operation of this system, may **void** the warranty.

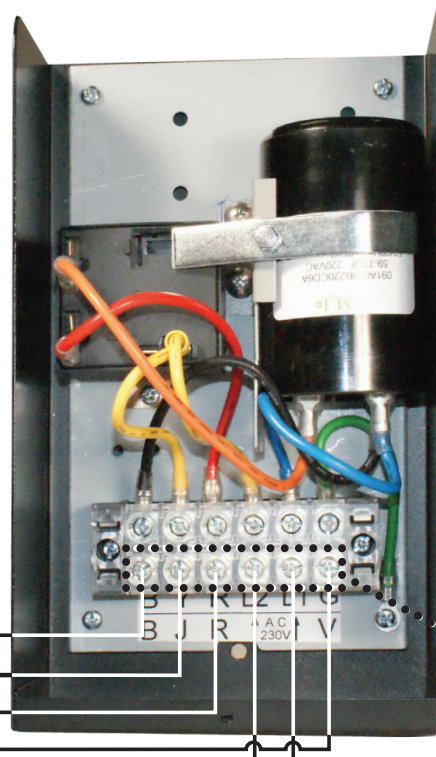
		WIRE CHART				
HP	V	GAUGE				
		14	12	10	8	6
1/2	115	100'	160'	250'	390'	620'
1/2	230	400'	650'	1020'	1610'	2510'
3/4	230	300'	480'	760'	1200'	1870'
1.0	230	250'	400'	630'	900'	1540'
1.5	230	190'	310'	480'	770'	1200'

*\* If you need other configuration, contact us*



**4 wires to the pump motor.**

**Black**  
**Yellow**  
**Red**  
**Green**



**2 wires from the pressure switch, not polarised.**

**Use this section to connect your wires.**

**THESE INSTRUCTIONS ARE VALID FOR 3 WIRE (+ GROUND) DEEP WELL PUMP INSTALLATION.**